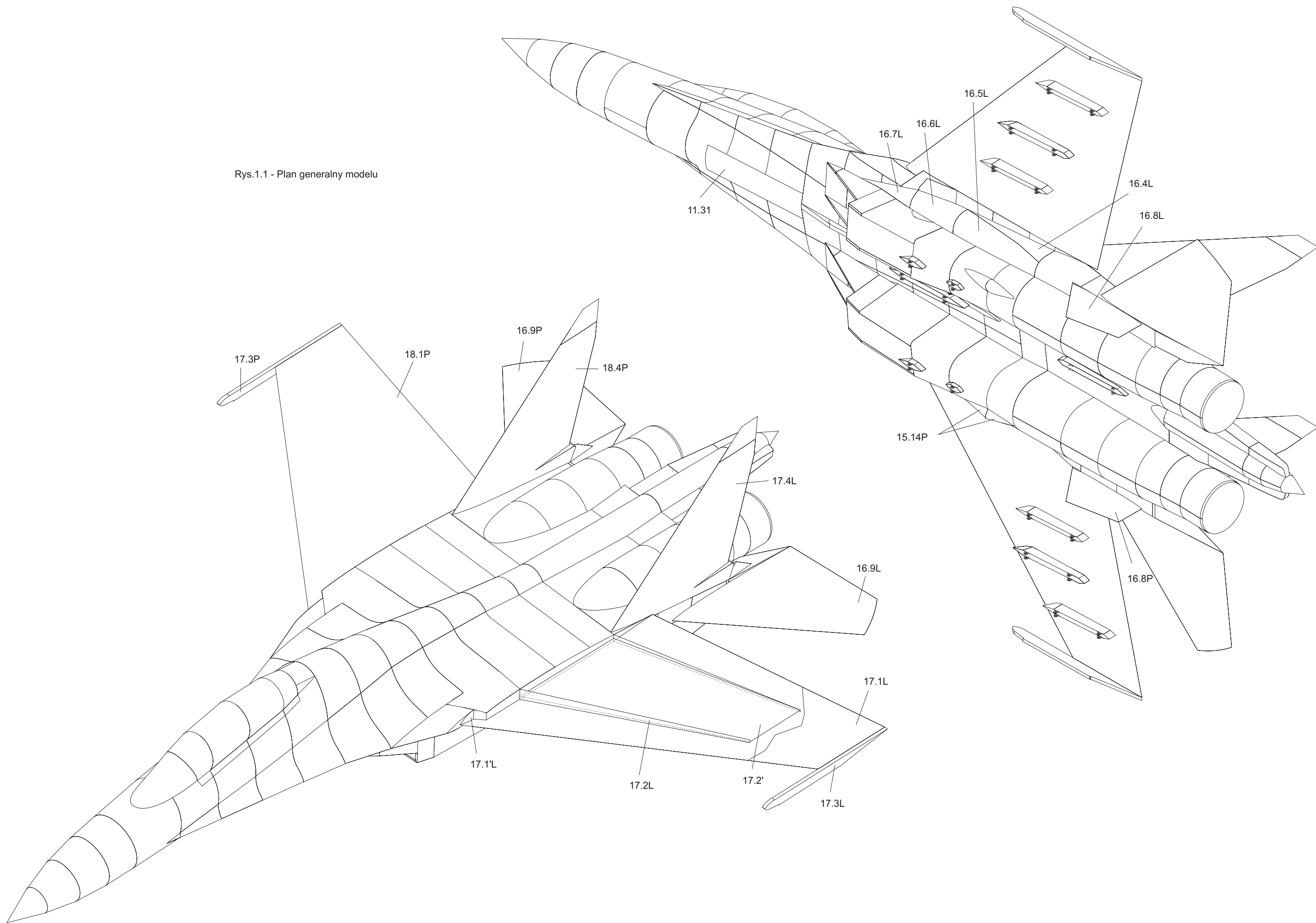
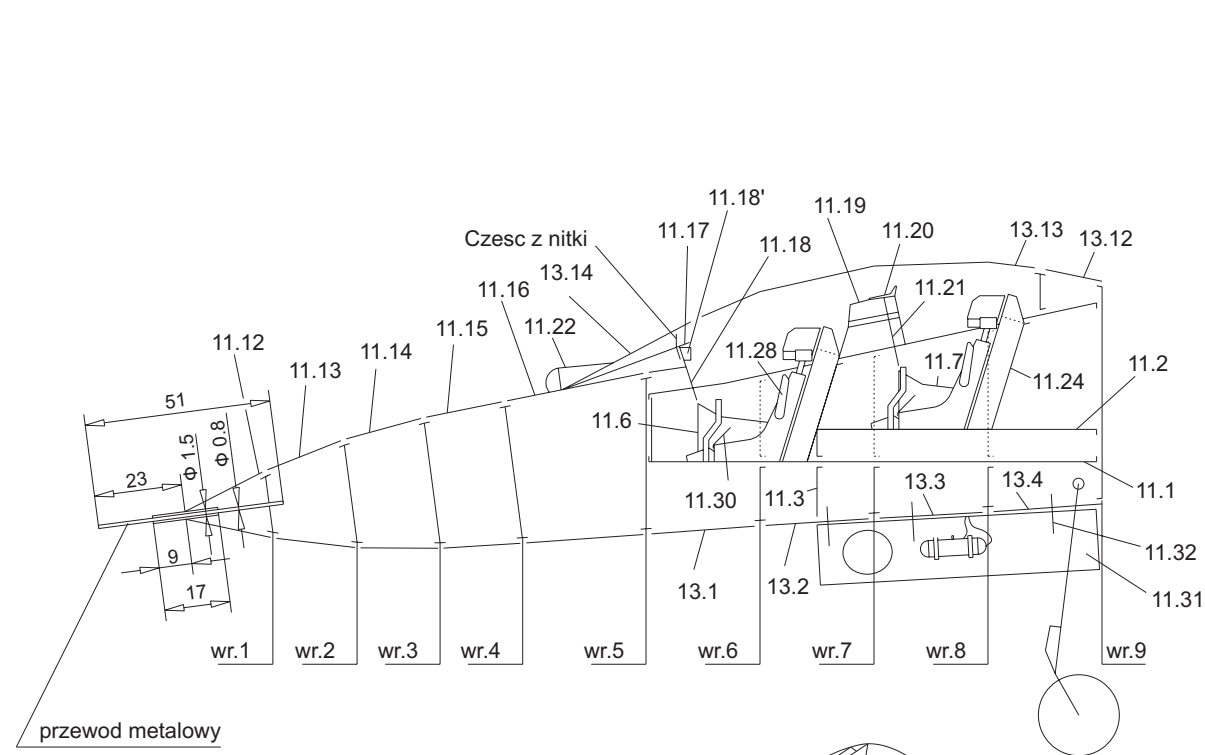
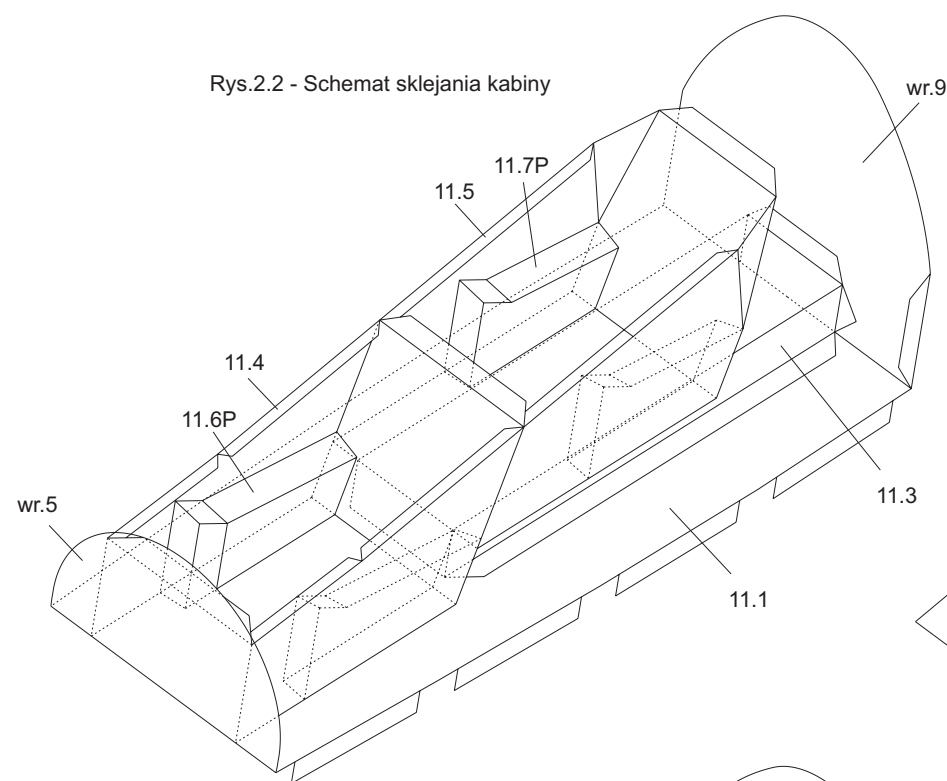


Rys.1.1 - Plan generalny modelu

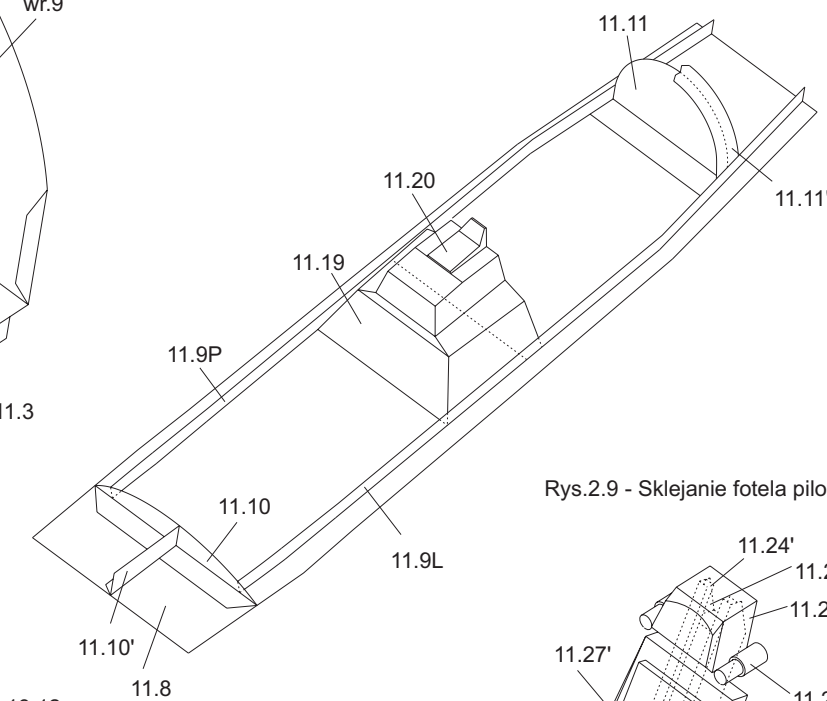




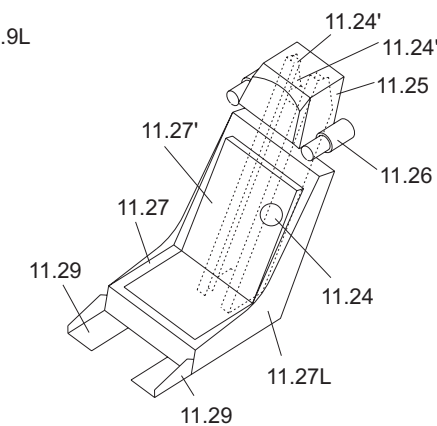
Rys.2.2 - Schemat sklejania kabiny



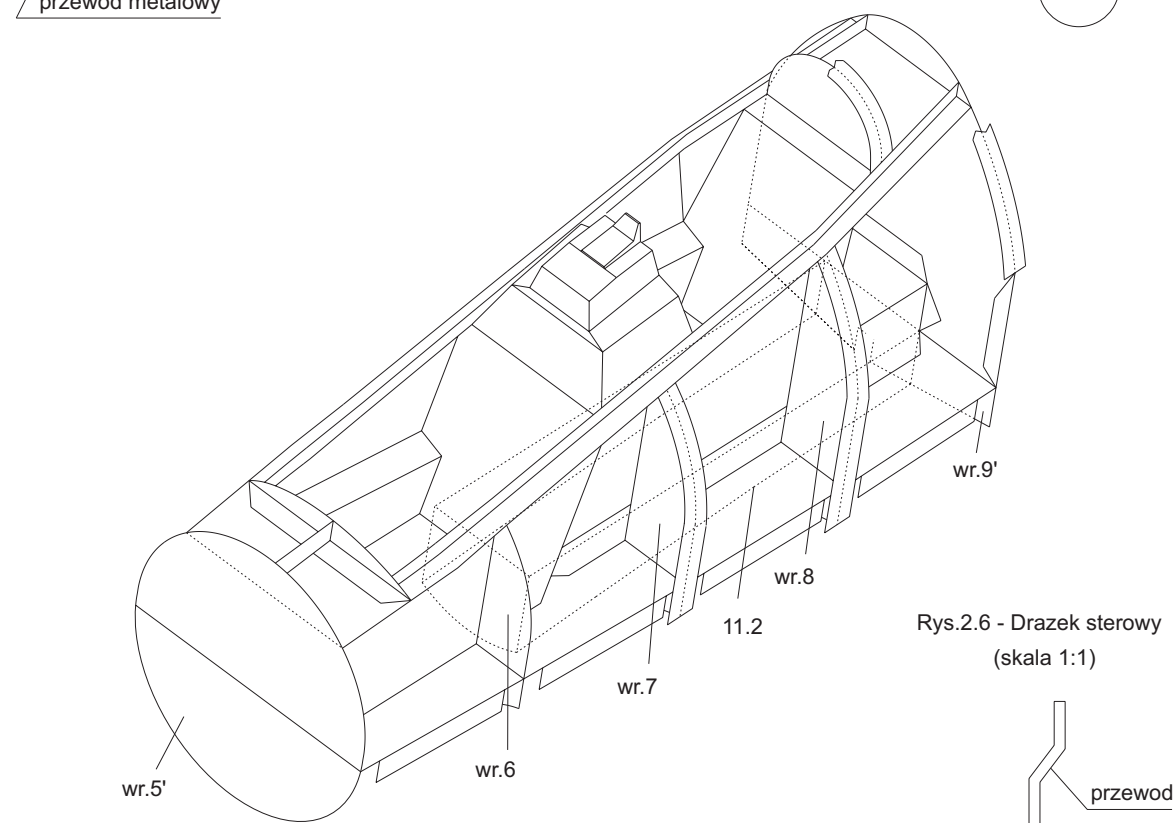
Rys. 2.3 - Sklejanie szkieletu oszklenia kabiny



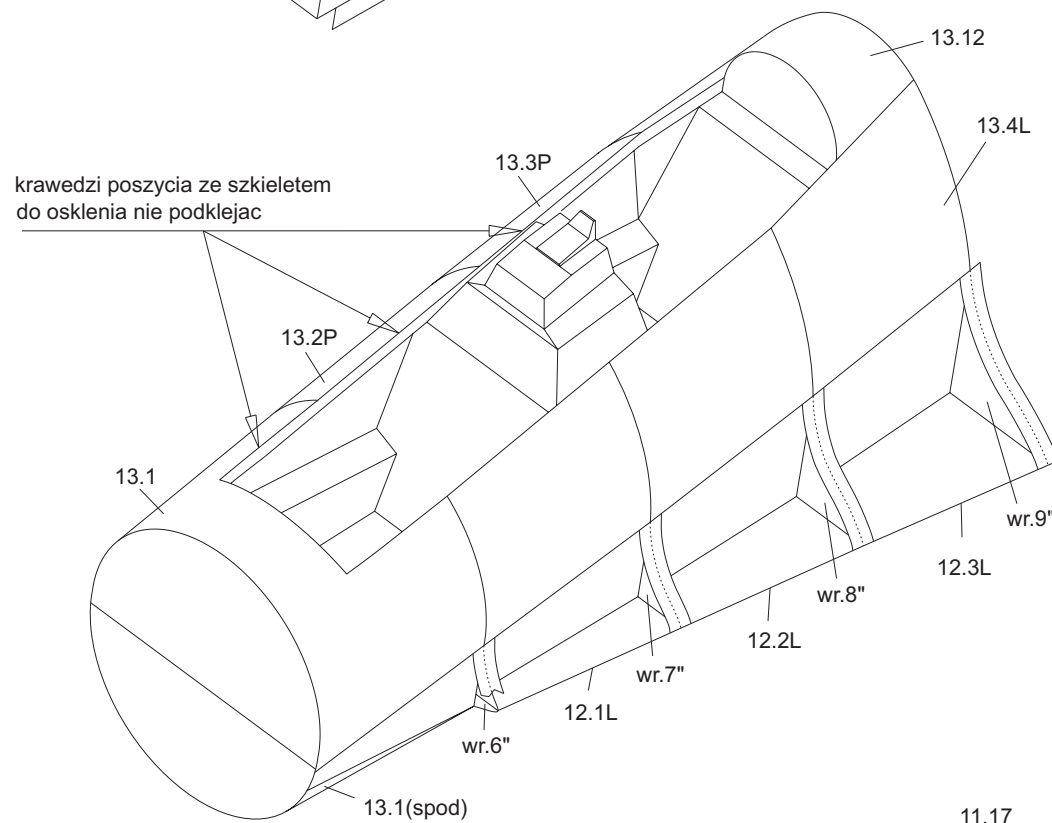
Rys.2.9 - Sklejanie fotela pilota



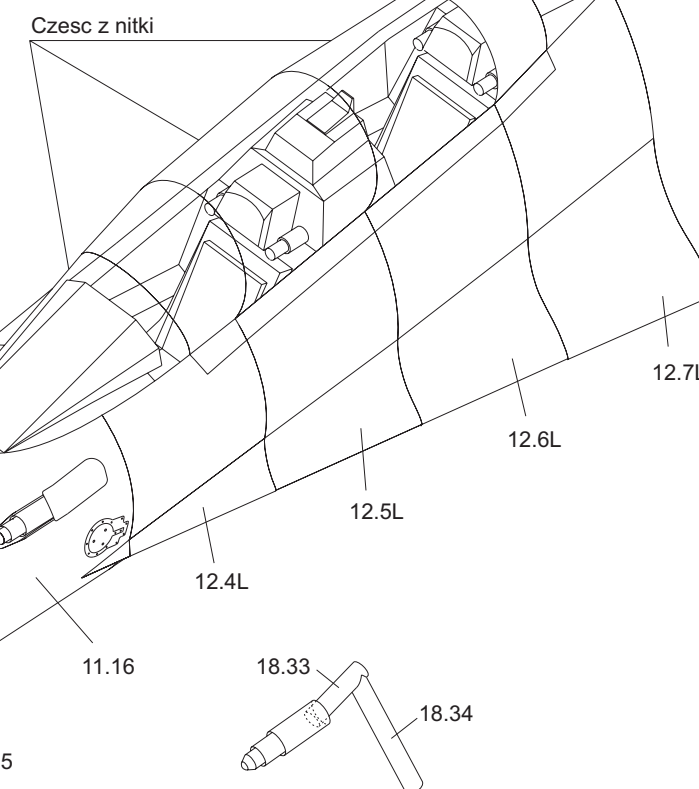
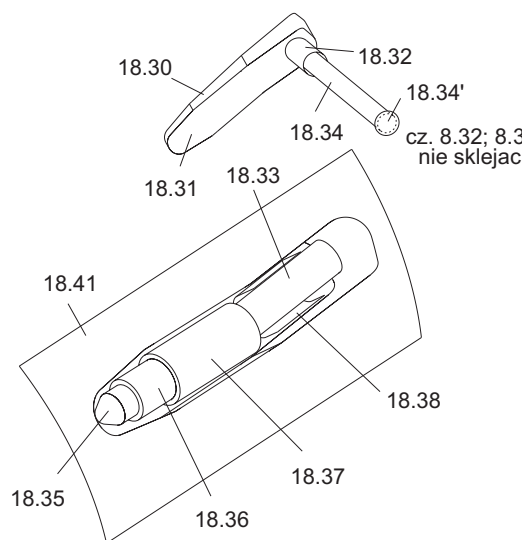
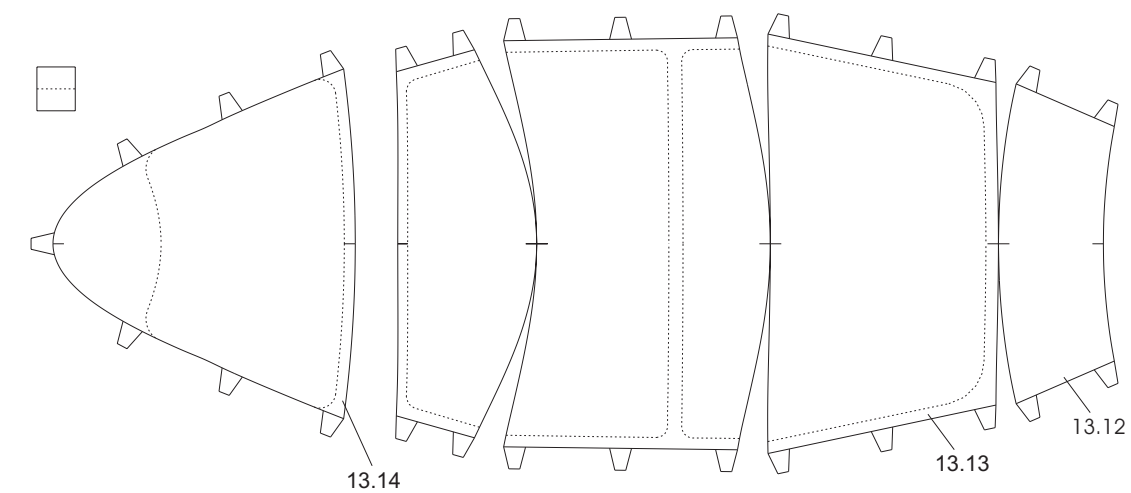
Rys.2.7 - Sklejanie nosa i fary do ladowania



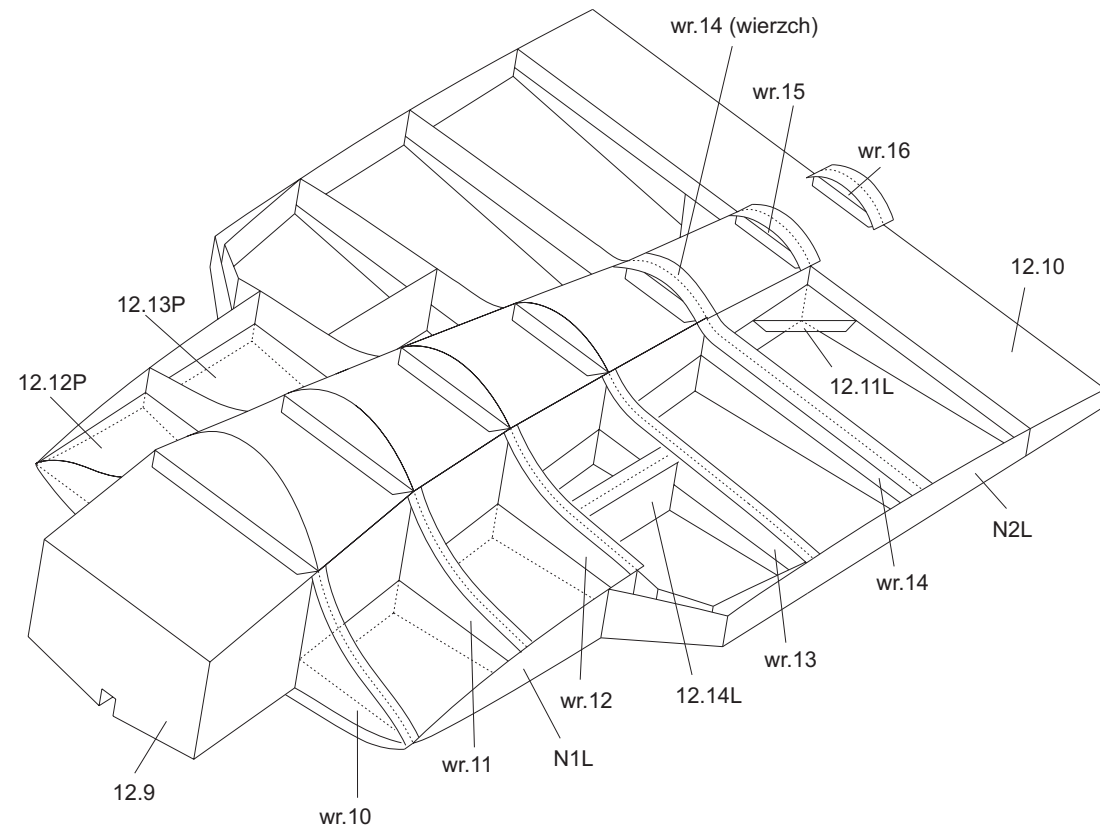
Rys.2.6 - Drazek sterowy (skala 1:1)



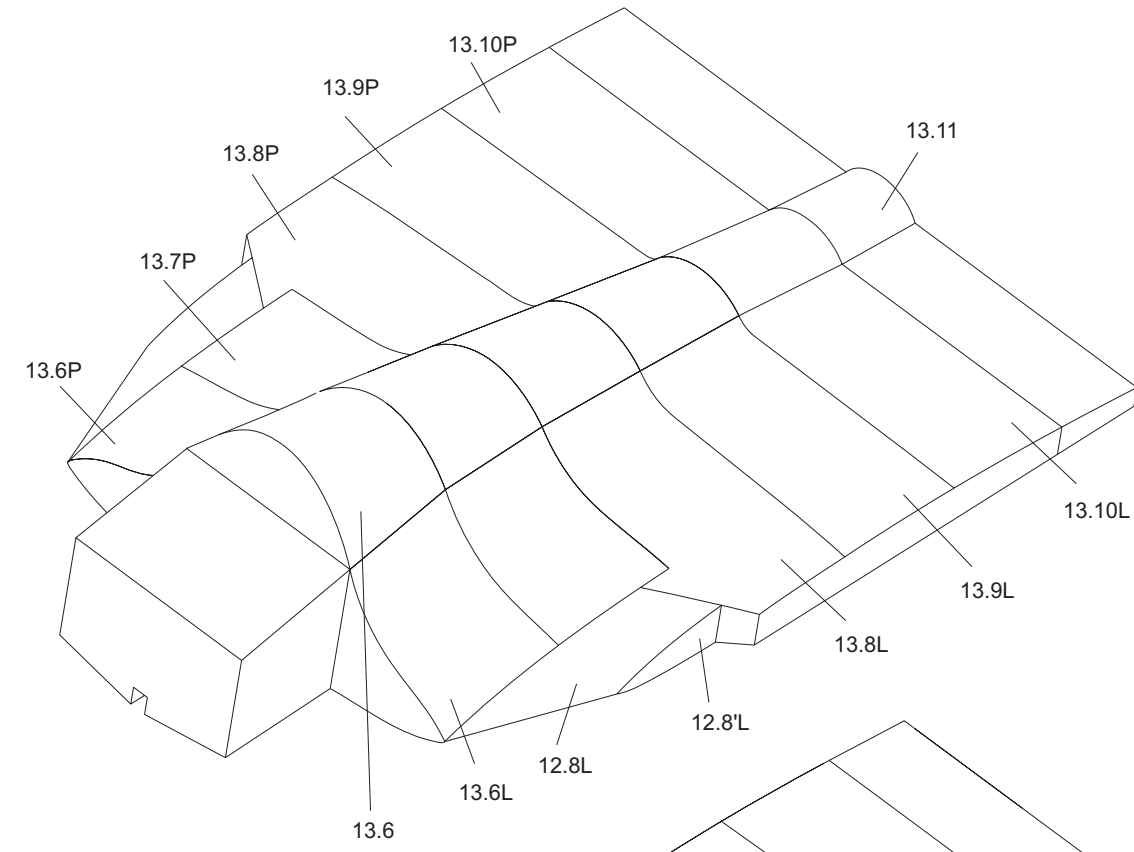
Rys.2.8 - Szablony do czeski z nitki (Skala 1:1)



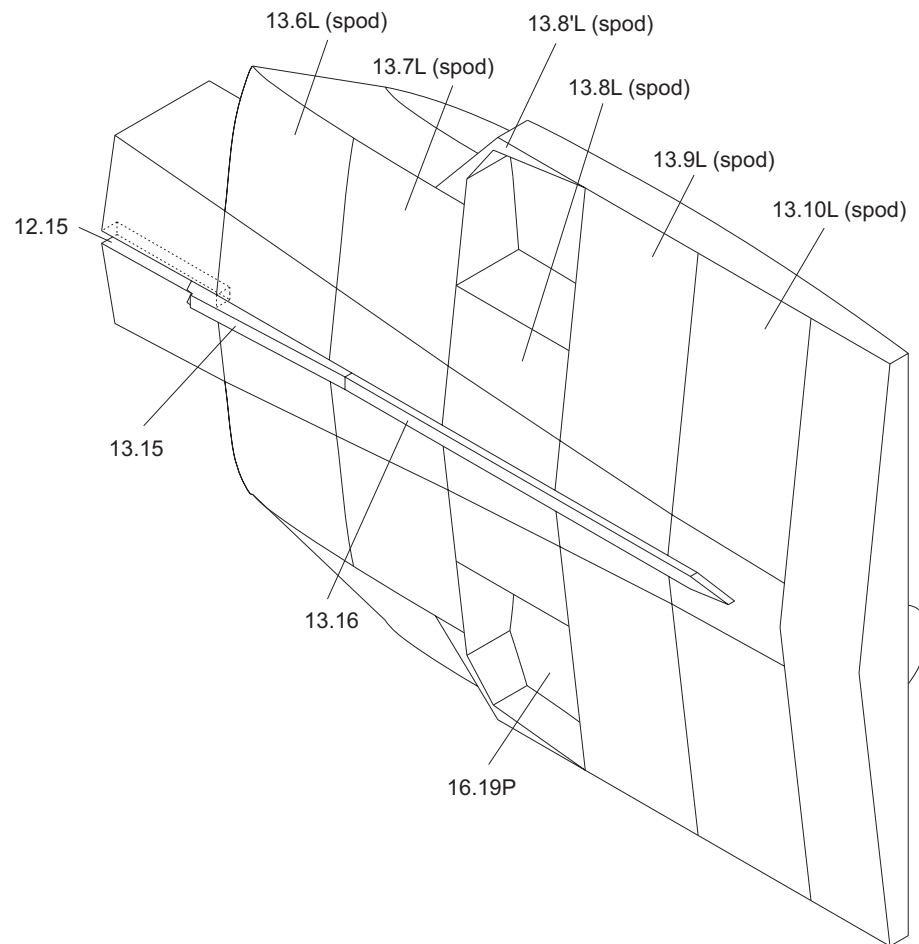
Rys.3.1 - Sklejanie spodkowego fragmentu kadłuba



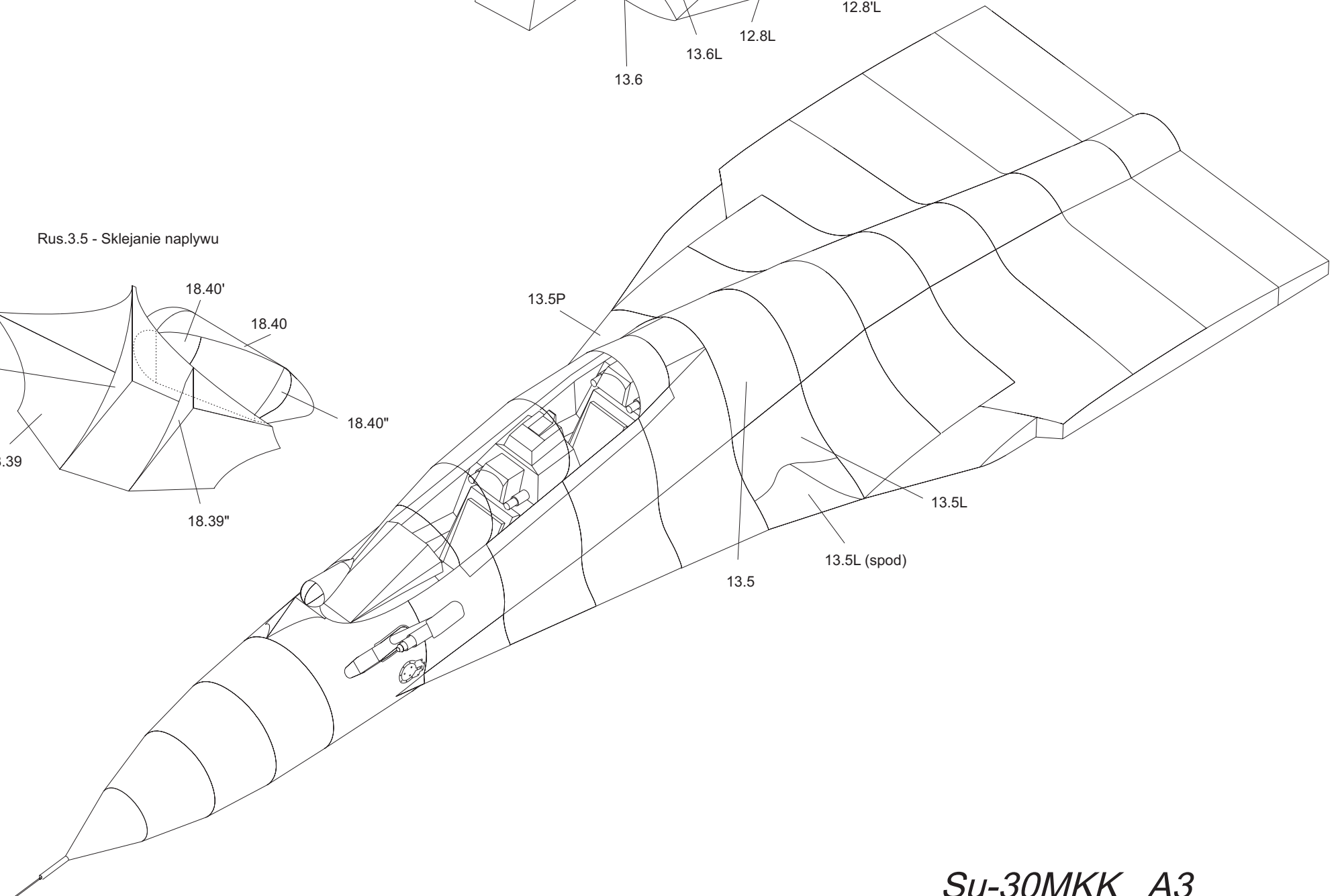
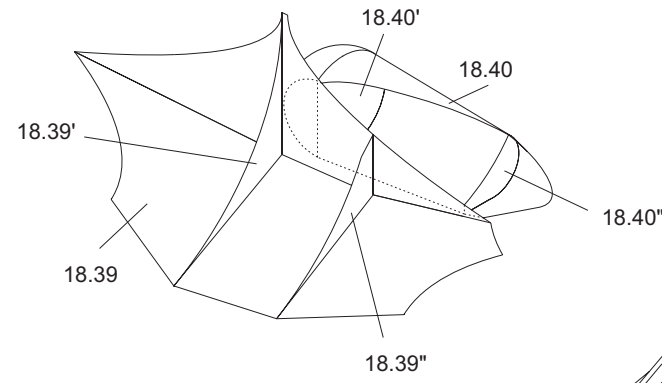
Rys.3.2 - Oklejanie poczytem srodkowej czesi kadłuba

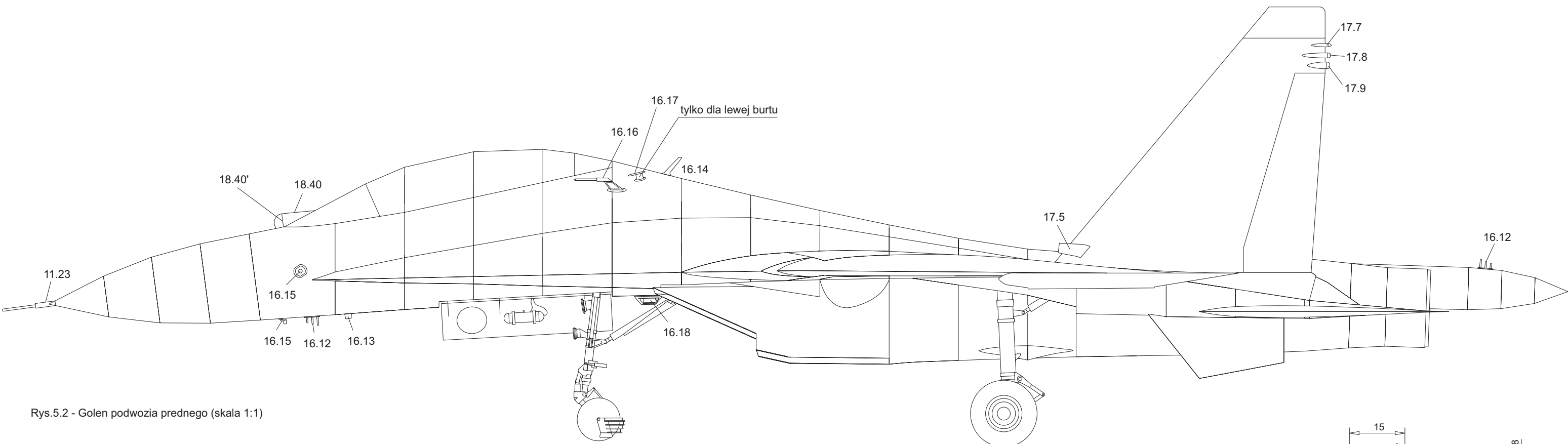


Rys.3.3 - Oklejanie poczytem srodkowej czesi kadłuba

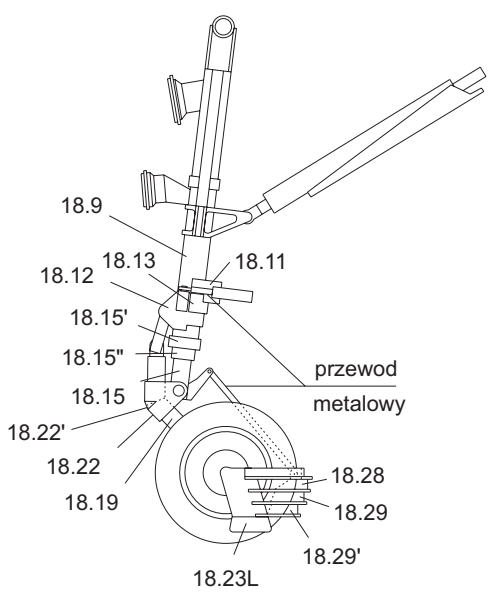


Rus.3.5 - Sklejanie naplywu

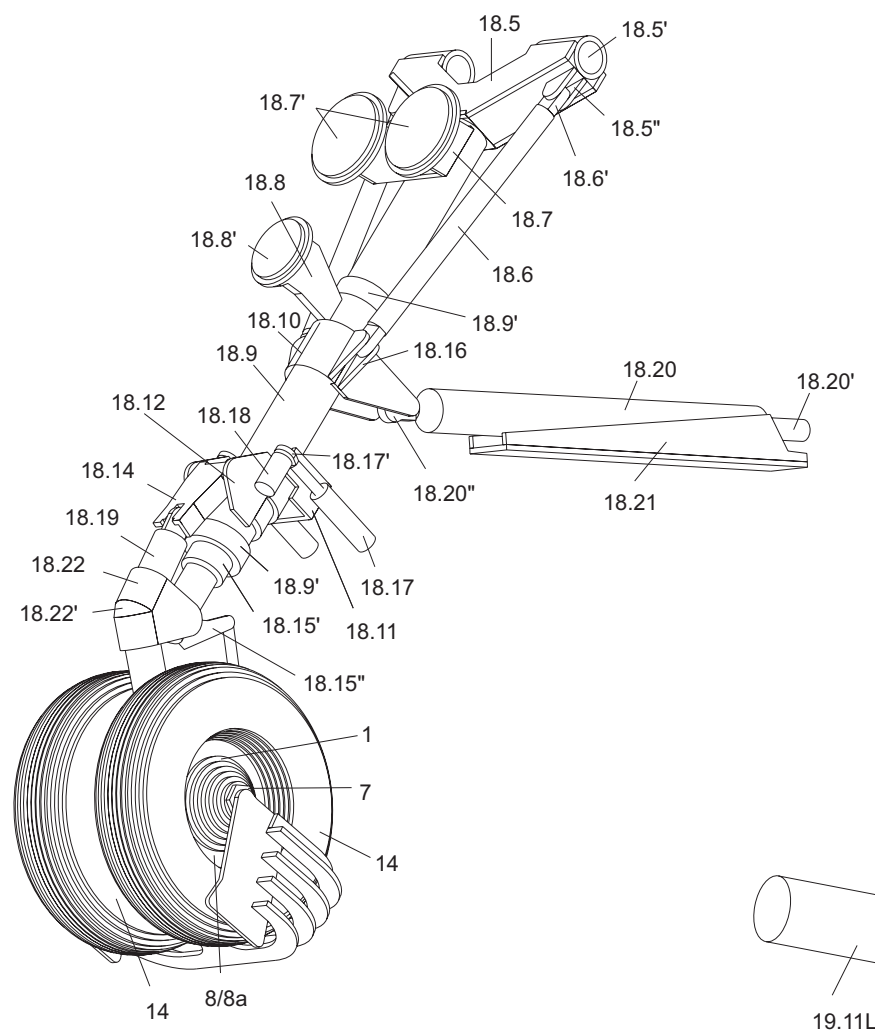




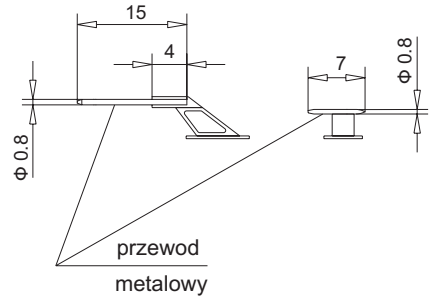
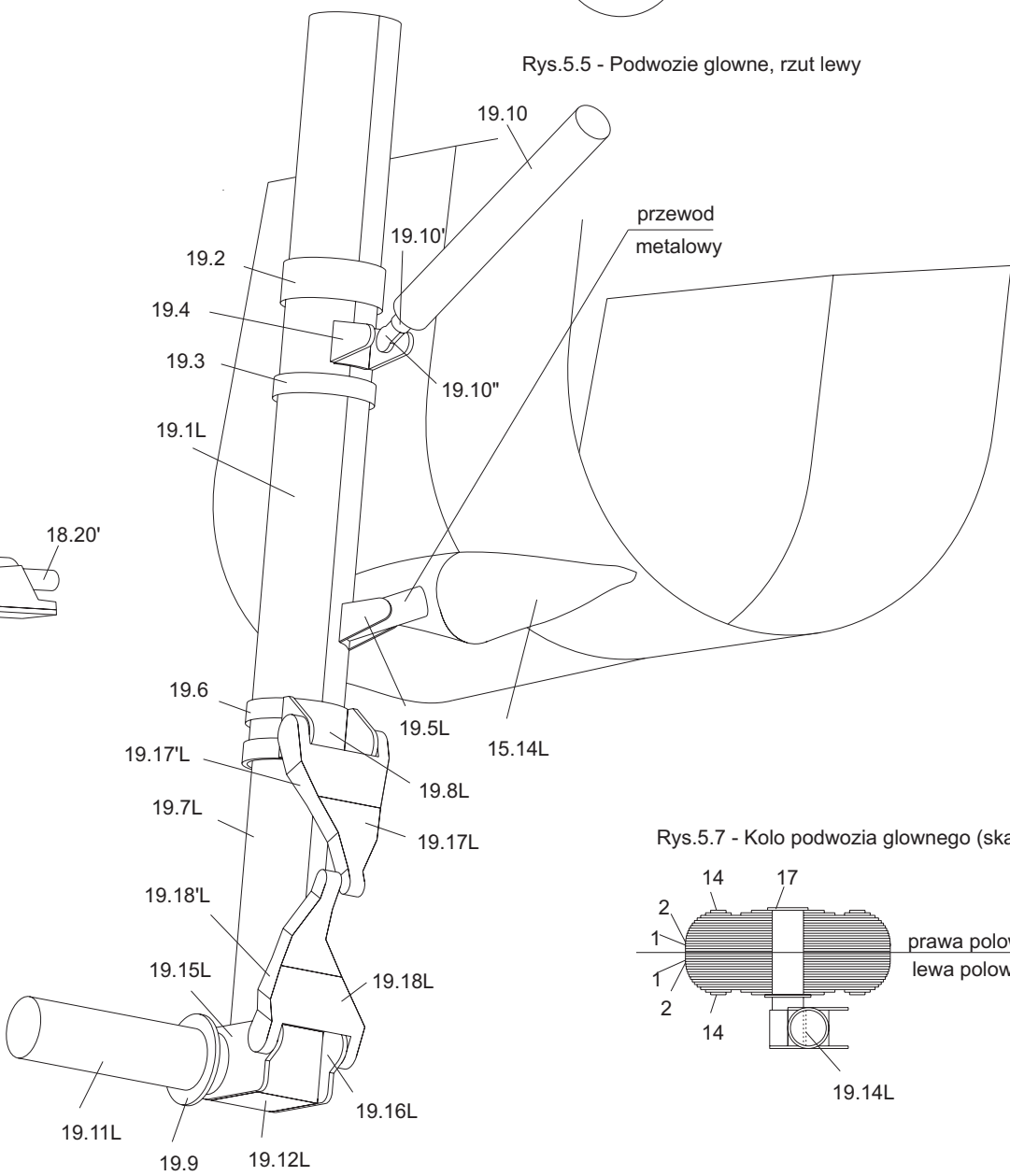
Rys.5.2 - Golen podwozia przedniego (skala 1:1)



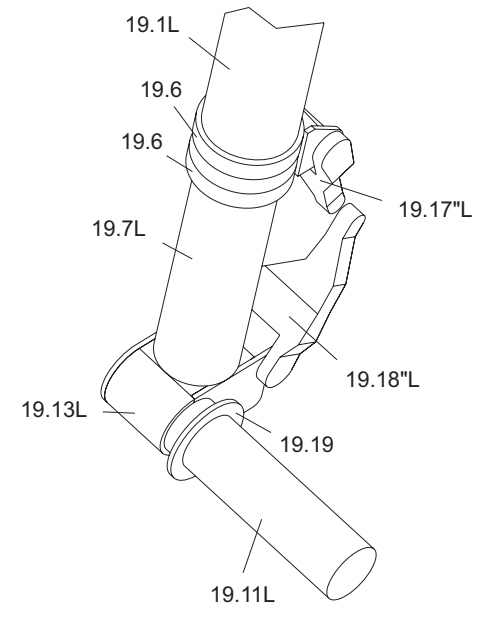
Rys.5.3 - Golen podwozia przedniego



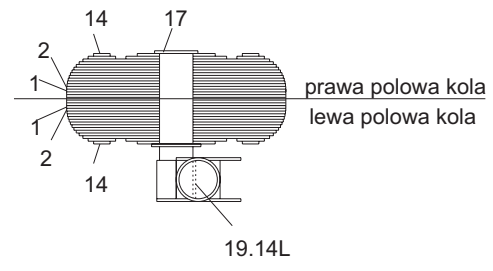
Rys.5.5 - Podwozie glowne, rzut lewy

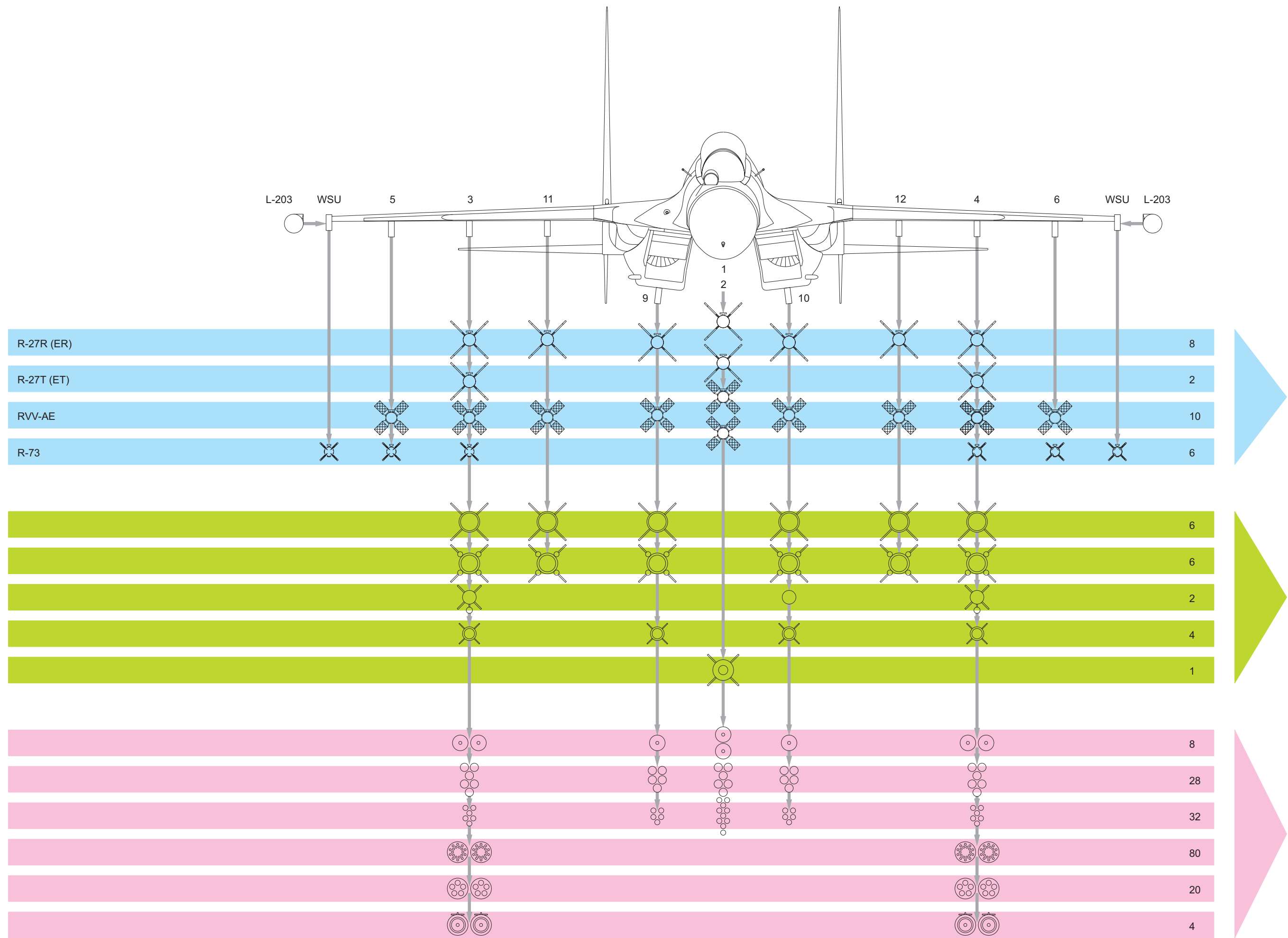


Rys.5.6 - Podwozie glowne, rzut lewy



Rys.5.7 - Kolo podwozia glownego (skala 1:1)





Su-30MKK A6